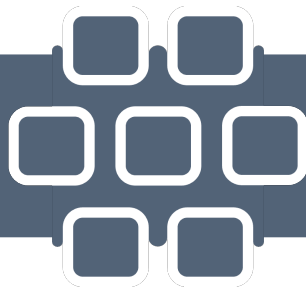
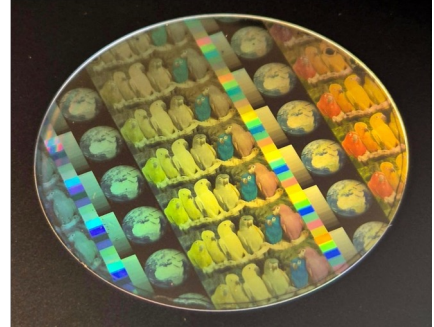
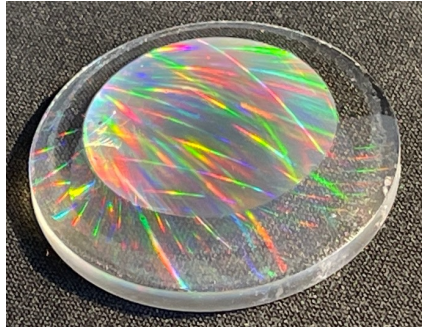
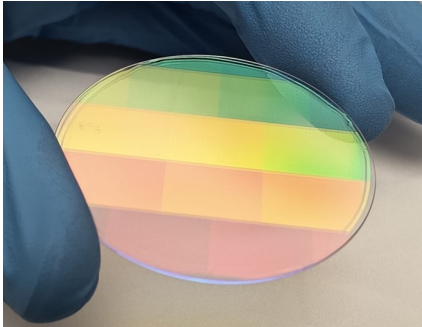


SOLNIL



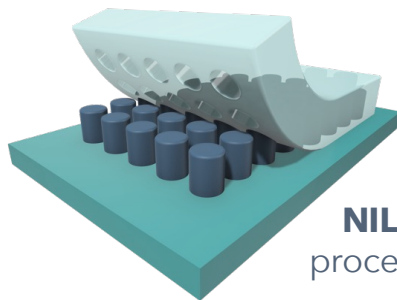
Nanoimprint
your world

DIRECT NANOIMPRINT LITHOGRAPHY OF OPTICAL GRADE METAL OXIDE MATERIALS



From metal oxide inks to **METASURFACES**

Metal oxide
INKS



NIL
process

COMPATIBILITY

Solnil technology is compatible with many materials, substrates, and motif morphologies and dimensions, relevant to biology, optics and photonics.

QUALITY

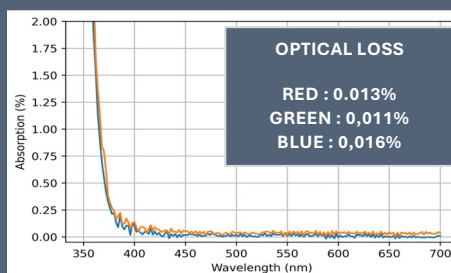
Solnil develops its own materials with adjusted optical properties and surface composition to meet end-user requirements (high quality, stability, performances).

MATERIALS

TiO_2 , SiO_2 , Al_2O_3 , ZrO_2 , ZnO ,
 HfO_2 , VO_2 , SnO_2 , WO_3 ...

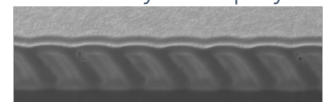
OPTICAL PROPERTIES

Very low absorption
Low haze/scattering < **0.05%**
Tuned index from **1.1** to **2.6**



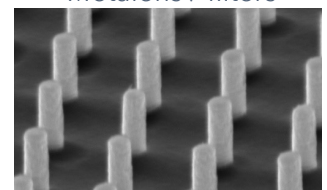
AR/VR

Near Eyes Display



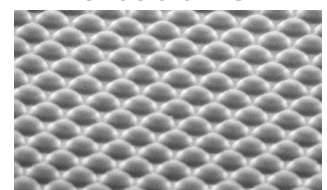
PHOTONICS

Metallens / filters



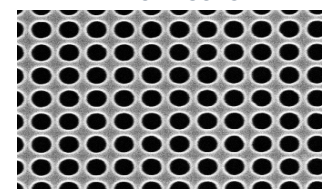
COLORS

Structural RGB



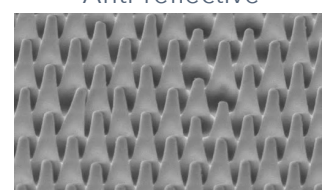
BIOTECH

Flow-cells



LASER

Anti-reflective



SOLNIL, Pépinière d'entreprises Luminy Biotech, 163 avenue de Luminy, 13011
Marseille France / www.solnil.com